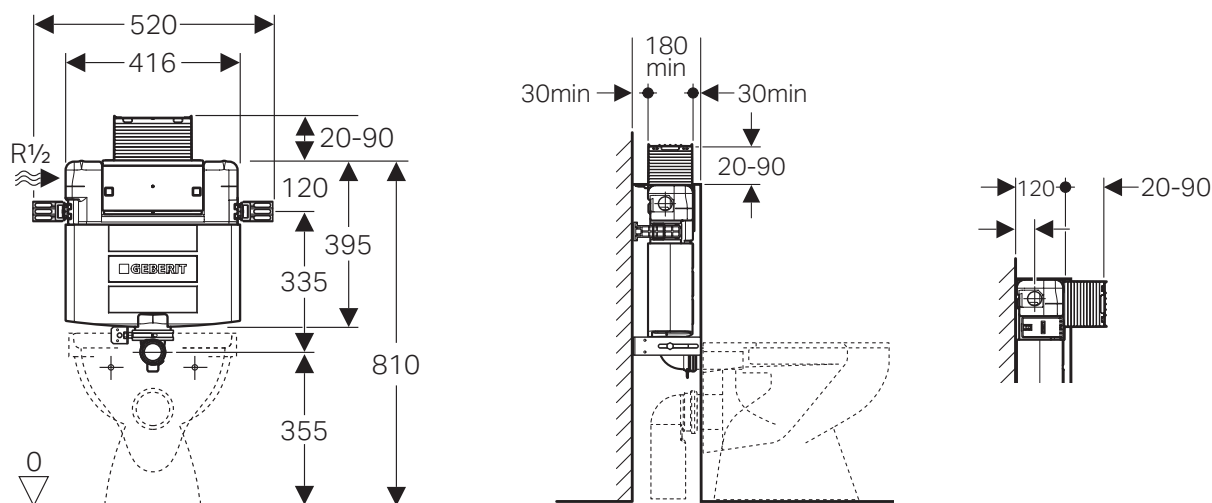


GEBERIT **OMEGA UNDER COUNTER MECHANICAL** **BTW 4S CONCEALED CISTERN**



Dimensions are nominal measurements only.

Separate service access required with pneumatic buttons.
 Remote Buttons require separate access to service the Cistern.

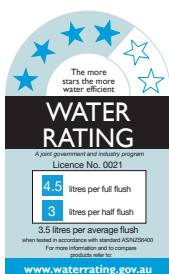
SPECIFICATIONS

Recommended use	Domestic, hotel and commercial
Material	High Density Impact Resistant Blow Molded Tank
Cistern Type	In Wall one piece tank
Installation type	Pre-Wall, Under Counter, Hob 180 min
Suitable for	BTW S or P Trap Suits all Major VAP Brands
Operation	Mechanical Top/Front press convertible to pneumatic*
Operating Pressure	100-500kPa
Button Options	Refer Page 2
Spare Parts	Guarantee of availability for 25 years
Technical Support	1800 Geberit



Product code – 1842017

To see the complete GEBERIT range go to
www.reece.com.au/bathrooms



Disclaimer: Products in this specification manual must by regulation be installed by licensed and registered trade people. The manufacturer/distributor reserves the right to vary specifications or delete models from their range without prior notification. Dimensions are nominal measurements only. Dimensions and set-outs listed are correct at time of publication however the manufacturer/distributor takes no responsibility for printing errors.

Tech Page – Version 1



OMEGA UNDER COUNTER MECHANICAL BTW 4S CONCEALED CISTERN

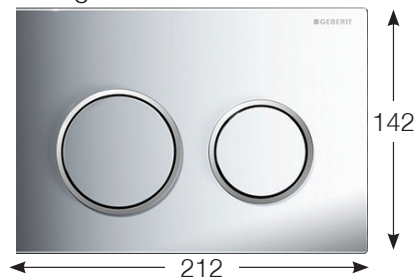
BUTTON OPTIONS

Omega20

Omega UC Buttons Top/Front press

1811549	Omega20 D/F wht/chr/wht
1811550	Omega20 D/F blk/chr/blk
1811551	Omega20 D/F matt/chr/matt
1811552	Omega20 D/F chr/matt/chr

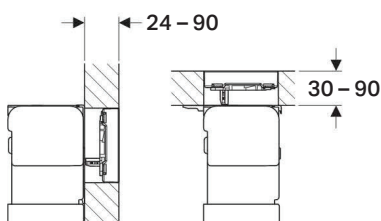
Omega20



Omega60

Omega UC Buttons Top/Front press

1811553	Omega60 D/F glass white *
1811554	Omega60 D/F glass black *
1811555	Omega60 D/F brushed chrome



Omega60



Note: Omega60 requires minimum 30mm top thickness refer to page 11

Omega Remote Buttons for Vanity installation

1811556	Omega Remote Square (70) Vanity Brushed SS
1811557	Omega Remote Square (70) Vanity White
1811558	Omega Remote Square (70) Vanity Black

Note: Remote buttons require separate access to service the cistern

Omega70



Brushed SS



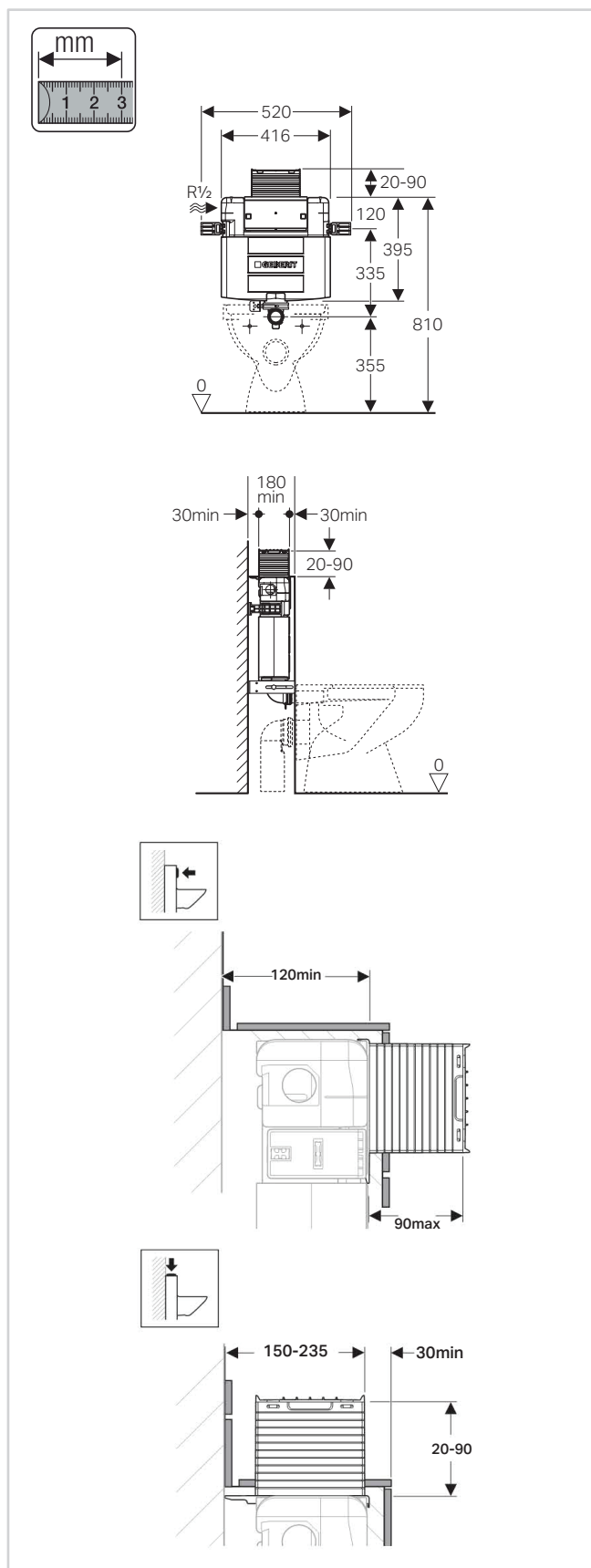
White



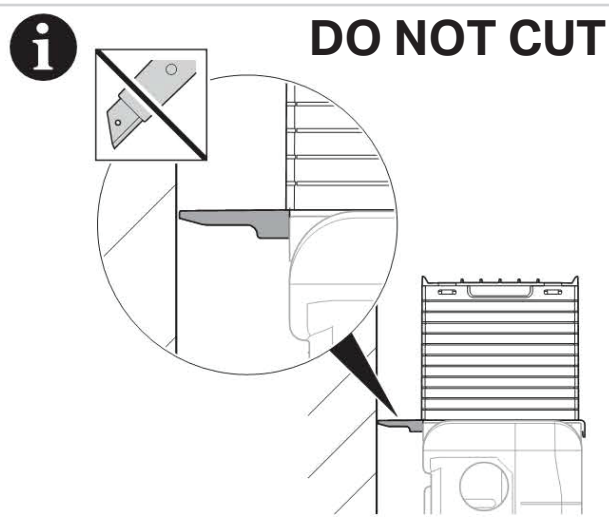
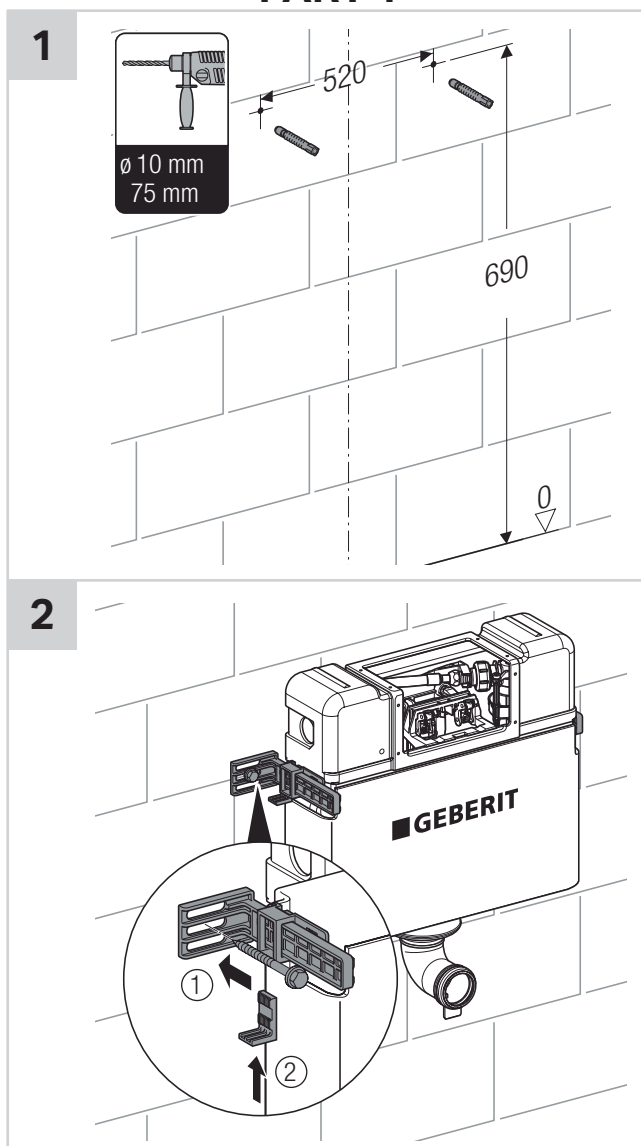
Black

OMEGA UNDER COUNTER MECHANICAL BTW 4S CONCEALED CISTERN

CISTERN INSTALLATION INSTRUCTIONS



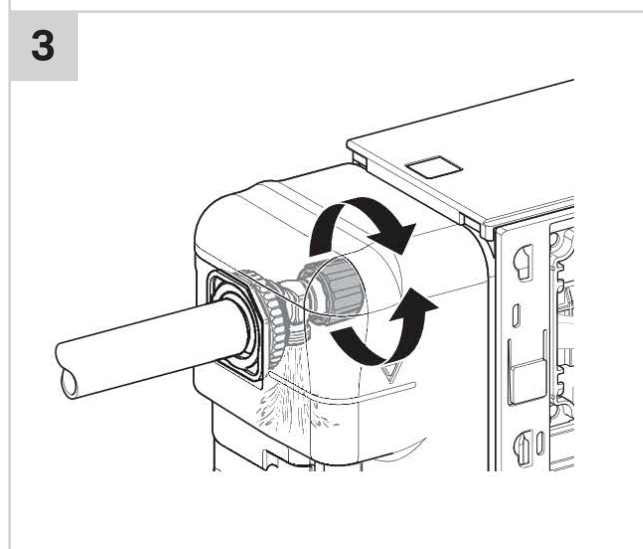
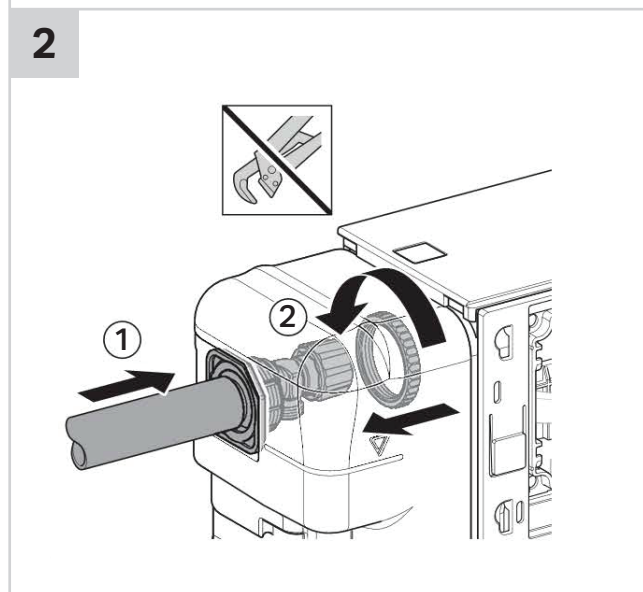
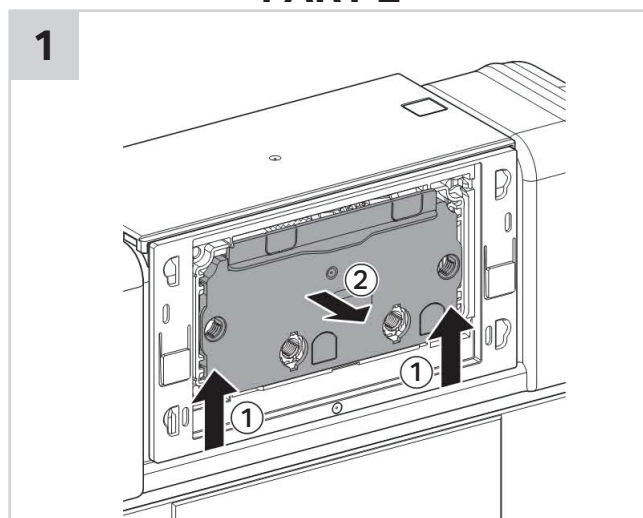
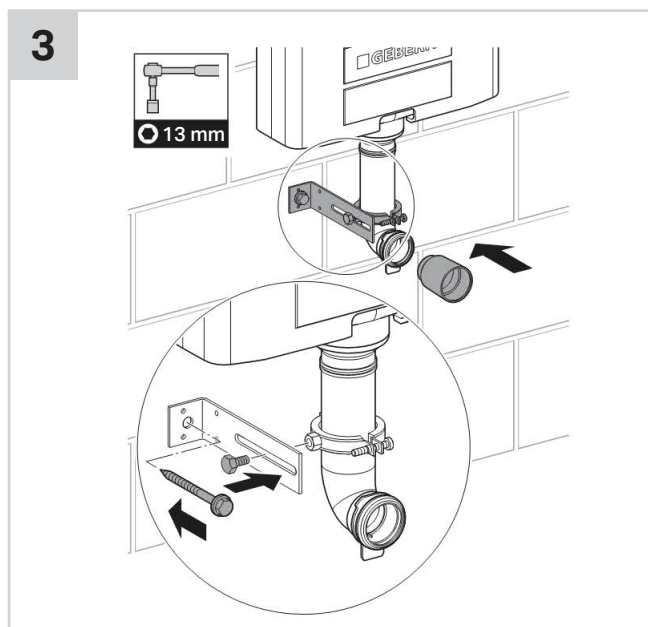
PART 1



OMEGA UNDER COUNTER MECHANICAL BTW 4S CONCEALED CISTERN

CISTERN INSTALLATION INSTRUCTIONS

PART 2



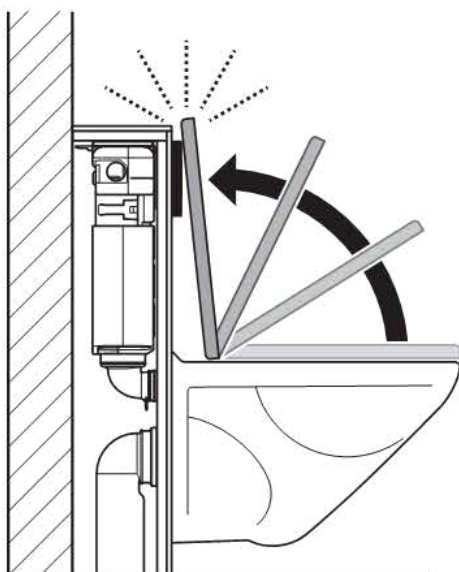
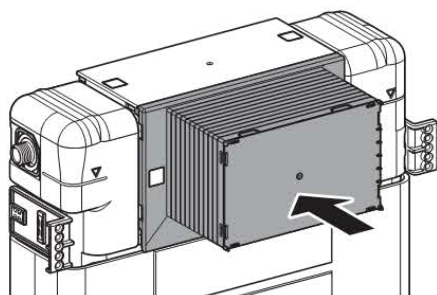
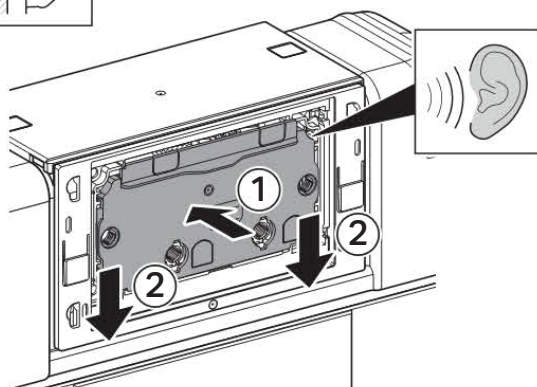
OMEGA UNDER COUNTER MECHANICAL BTW 4S CONCEALED CISTERN

CISTERN INSTALLATION INSTRUCTIONS

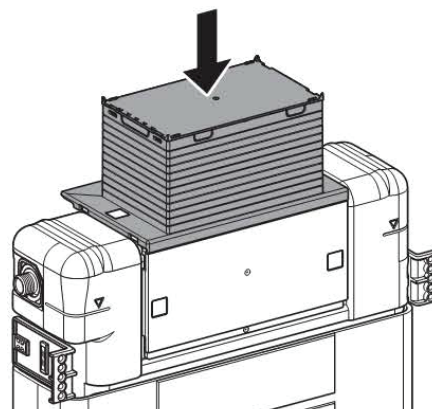
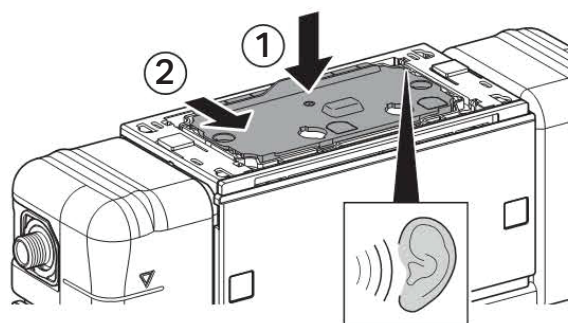
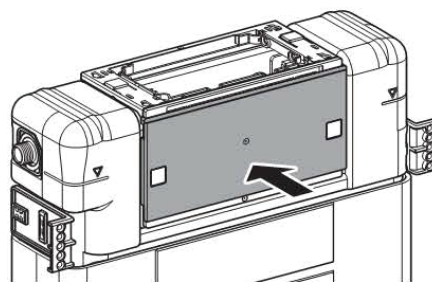
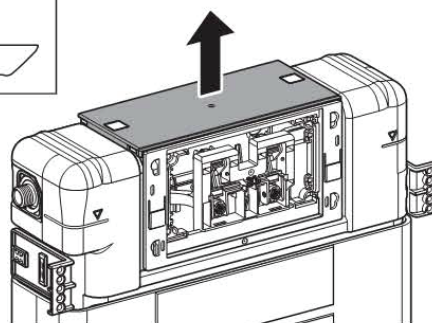
PART 3

3

FRONT PRESS



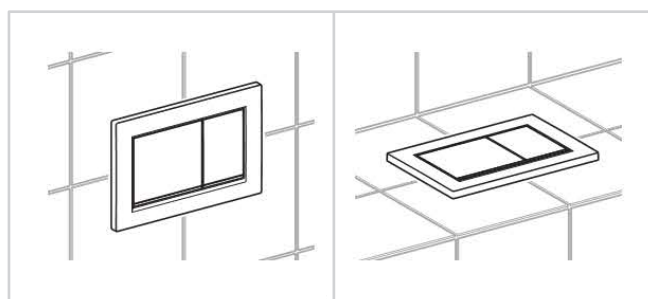
TOP PRESS



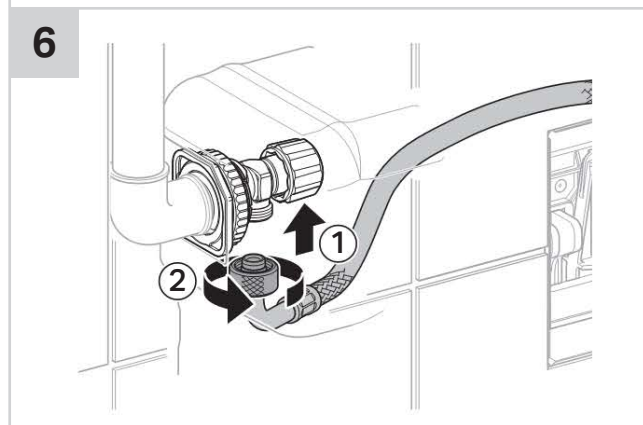
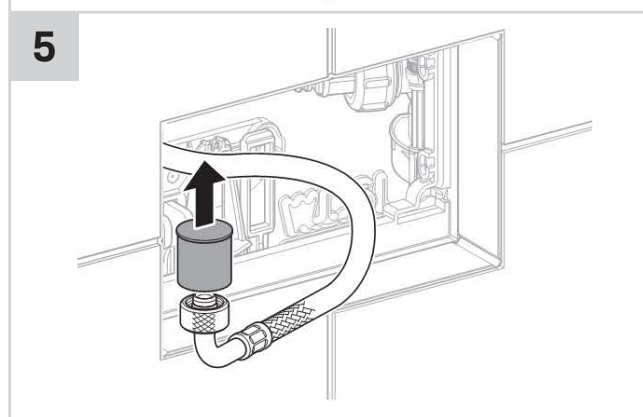
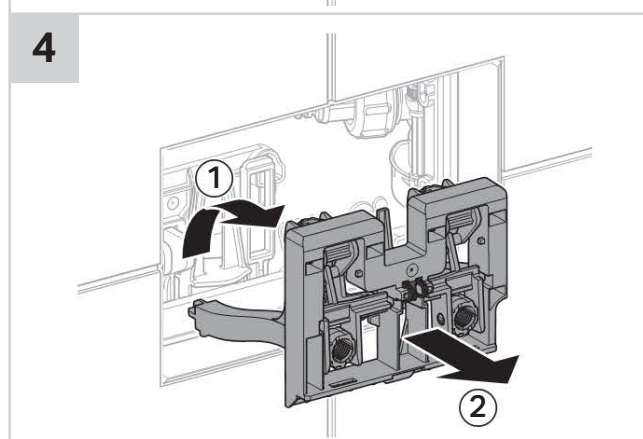
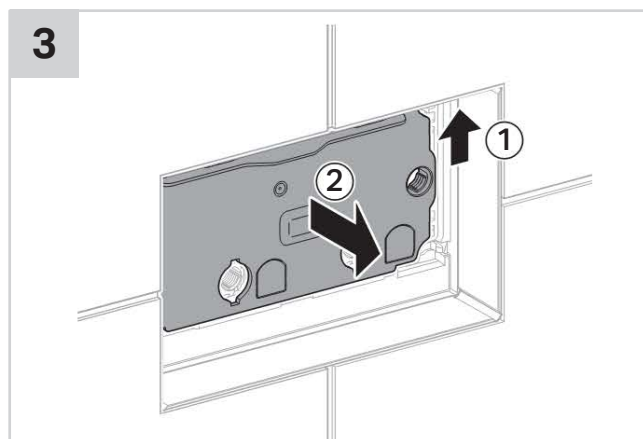
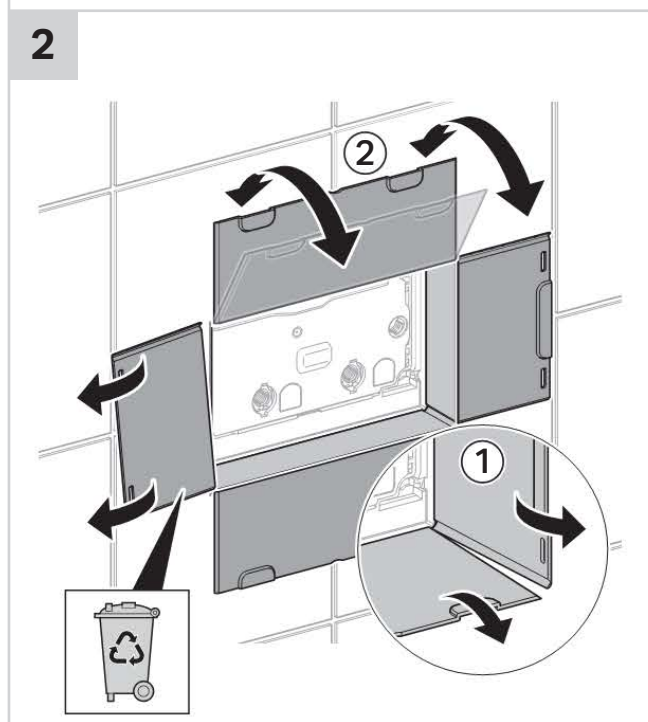
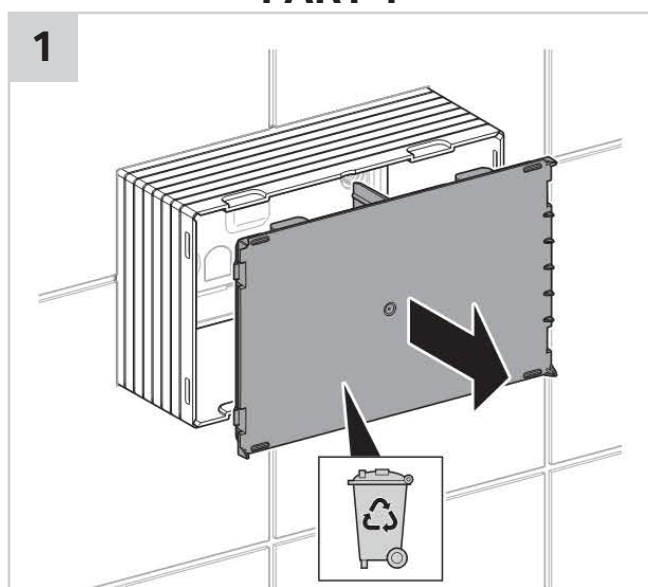
Plumbers, please ensure a copy of the installation instructions is left with the end user for future reference

OMEGA UNDER COUNTER MECHANICAL BTW 4S CONCEALED CISTERN

OMEGA20 / OMEGA30 BUTTON INSTALLATION INSTRUCTIONS



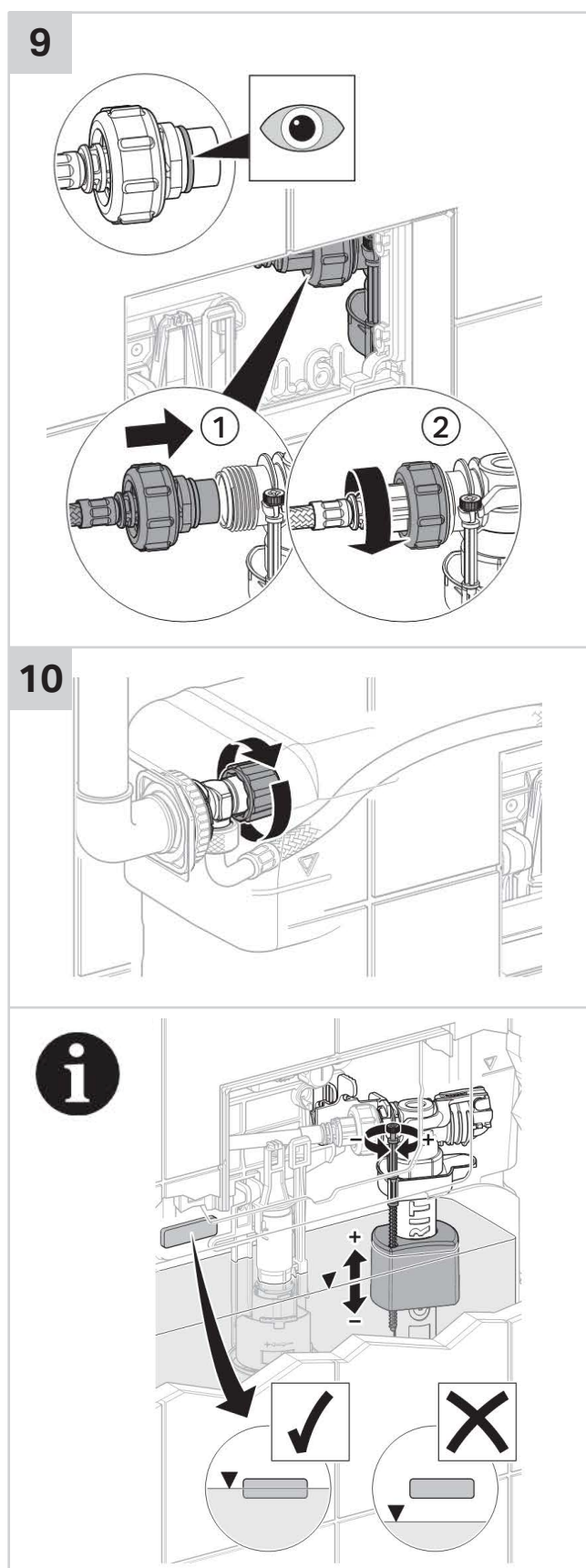
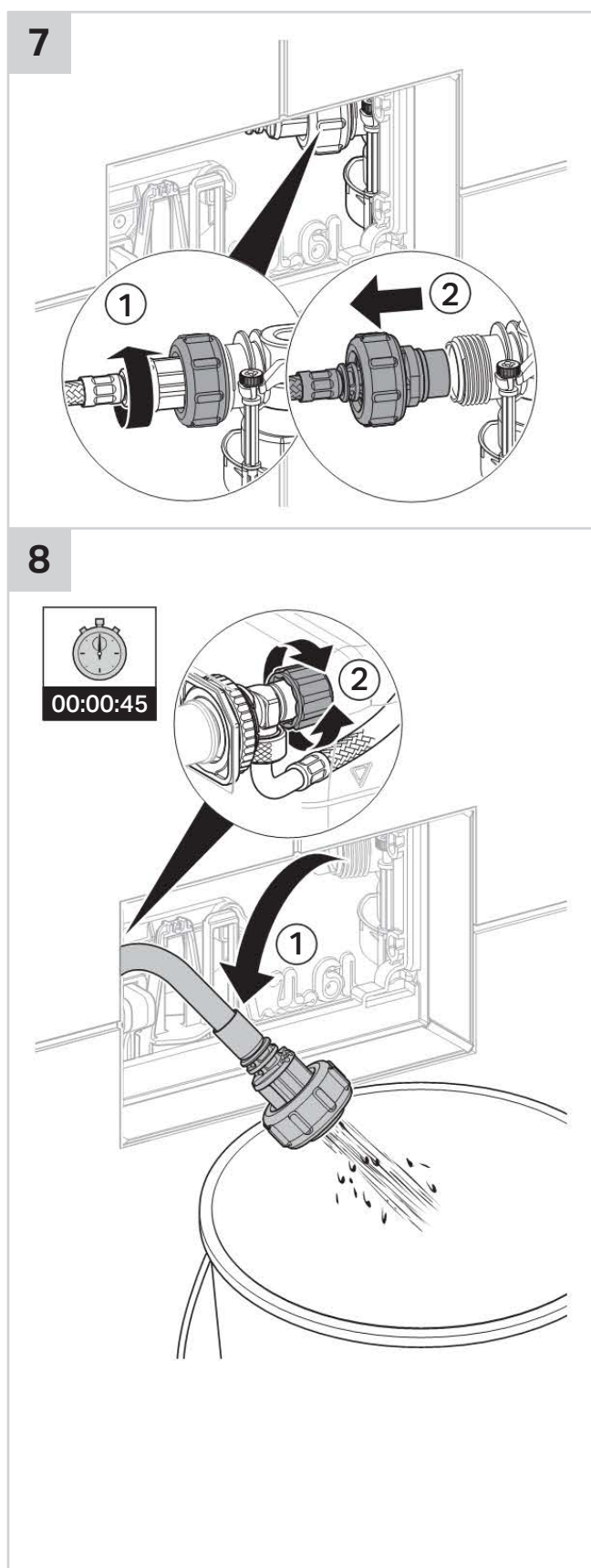
PART 1



■ GEBERIT

OMEGA UNDER COUNTER MECHANICAL BTW 4S CONCEALED CISTERN

OMEGA20 / OMEGA30 BUTTON INSTALLATION INSTRUCTIONS



Plumbers, please ensure a copy of the installation instructions is left with the end user for future reference

■ GEBERIT

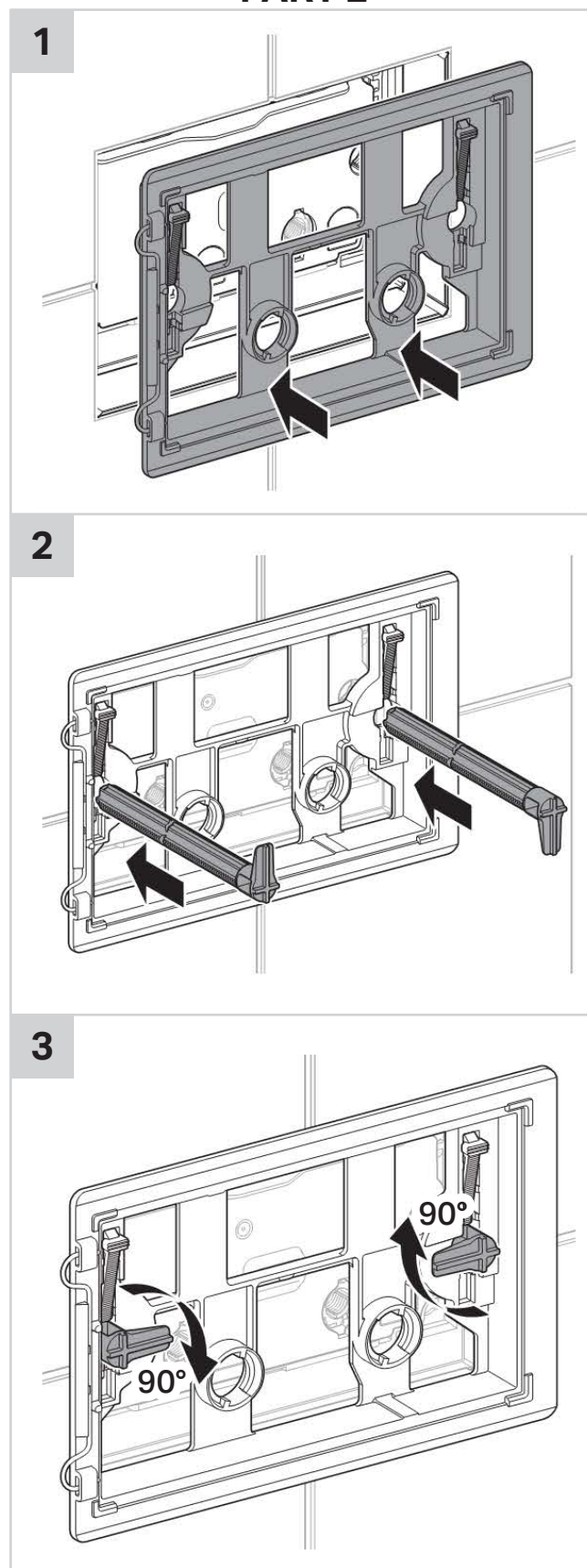
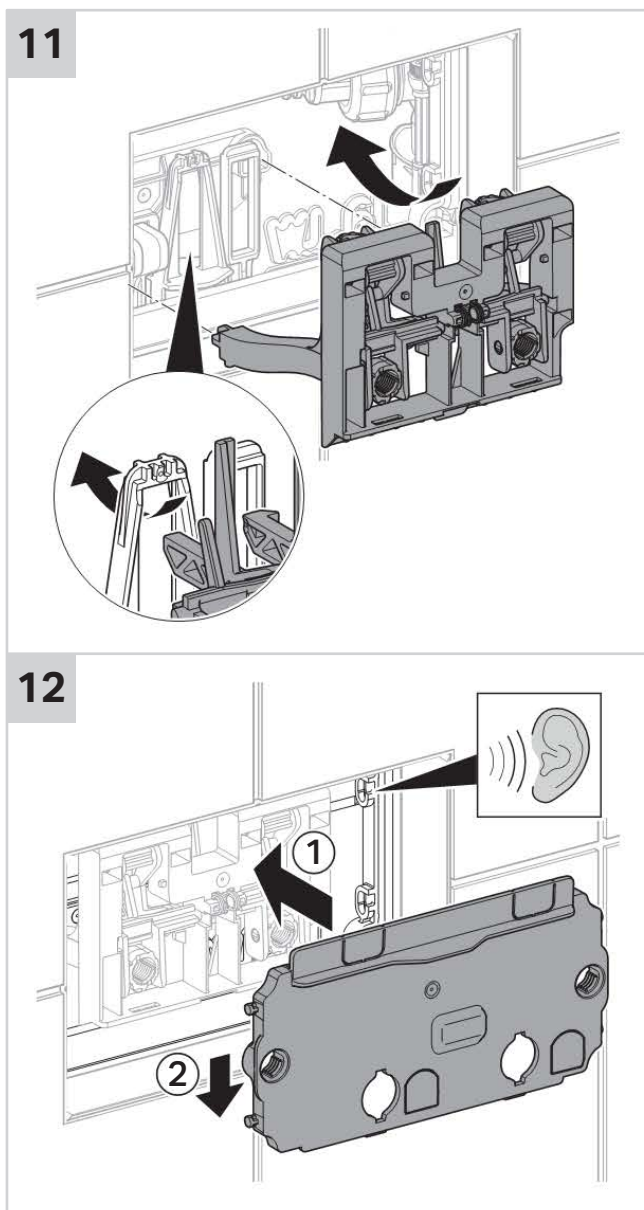
reece

■ GEBERIT

OMEGA UNDER COUNTER MECHANICAL BTW 4S CONCEALED CISTERN

OMEGA20 / OMEGA30 BUTTON INSTALLATION INSTRUCTIONS

PART 2



Plumbers, please ensure a copy of the installation instructions is left with the end user for future reference

■ GEBERIT

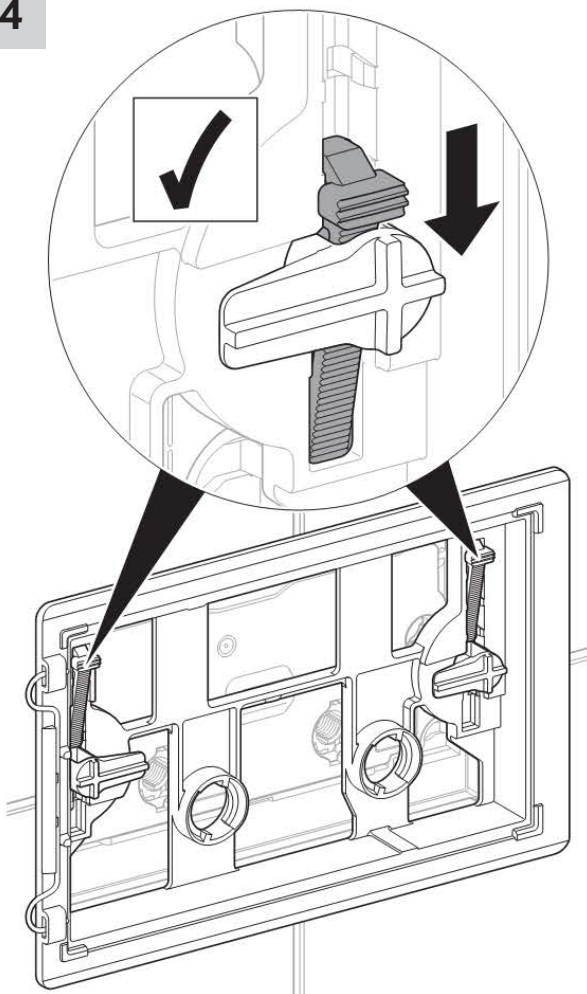
reece

■ GEBERIT

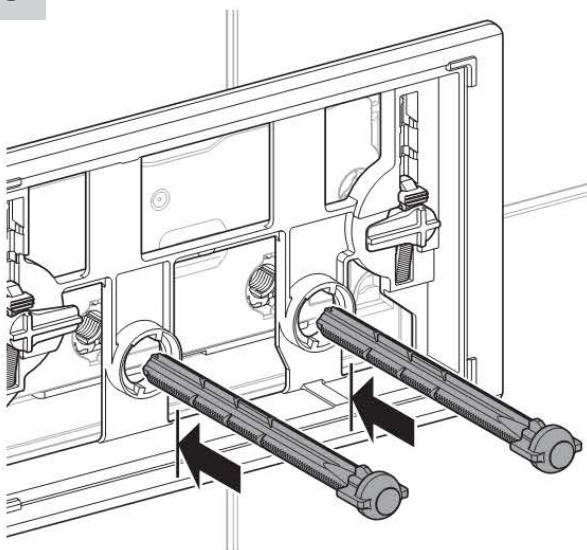
OMEGA UNDER COUNTER MECHANICAL BTW 4S CONCEALED CISTERN

OMEGA20 / OMEGA30 BUTTON INSTALLATION INSTRUCTIONS

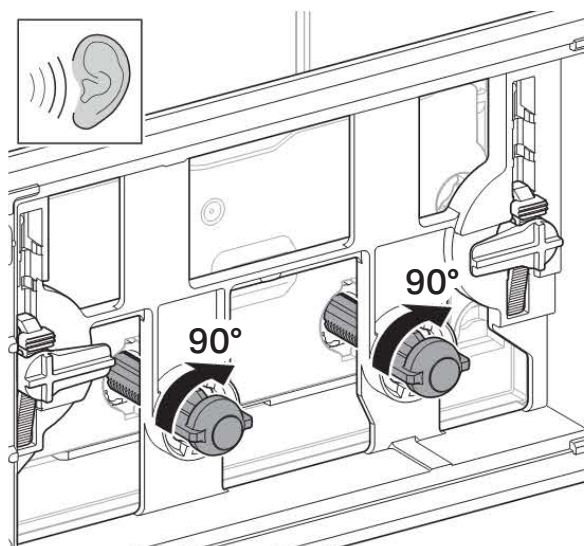
4



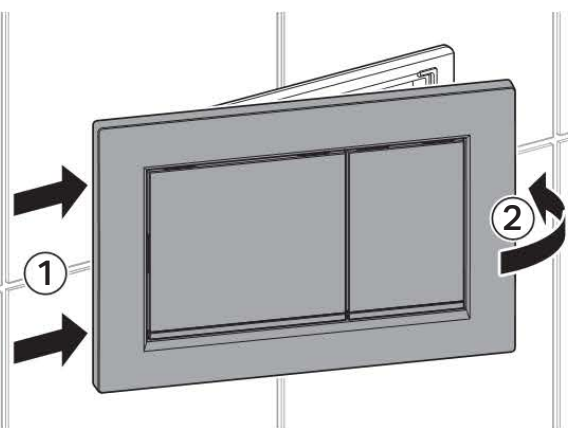
5



6 Lock push rods in position



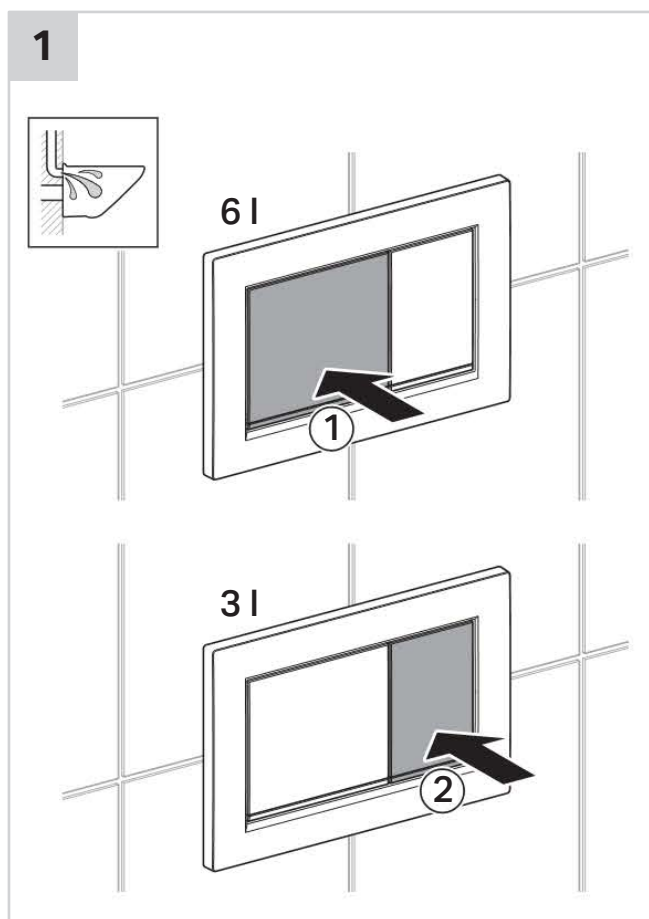
7



Plumbers, please ensure a copy of the installation instructions is left with the end user for future reference

■ GEBERIT

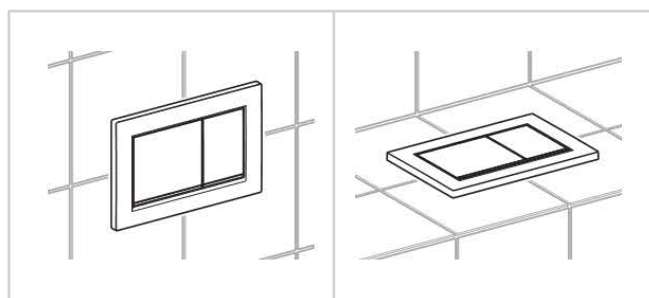
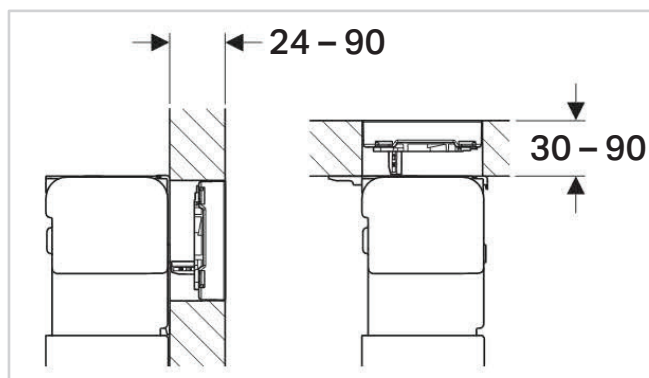
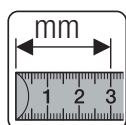
reece

**OMEGA UNDER COUNTER MECHANICAL
BTW 4S CONCEALED CISTERN****OMEGA20 / OMEGA30 BUTTON INSTALLATION INSTRUCTIONS**

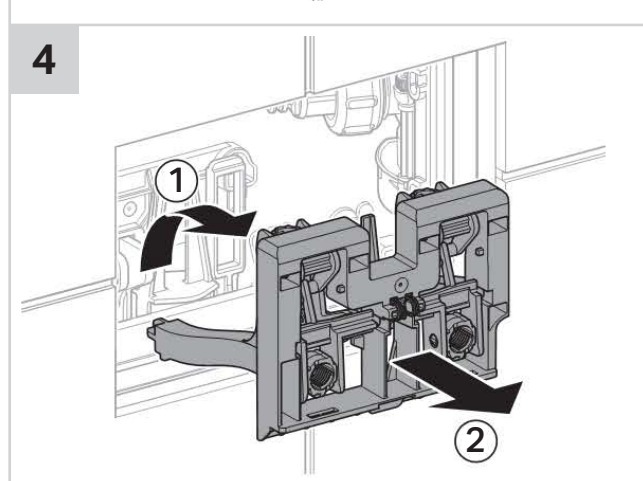
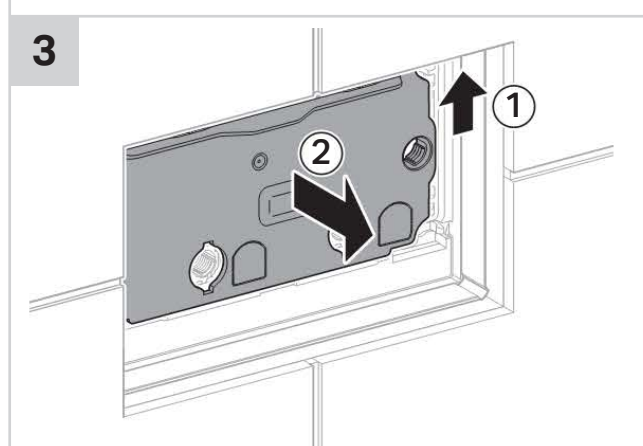
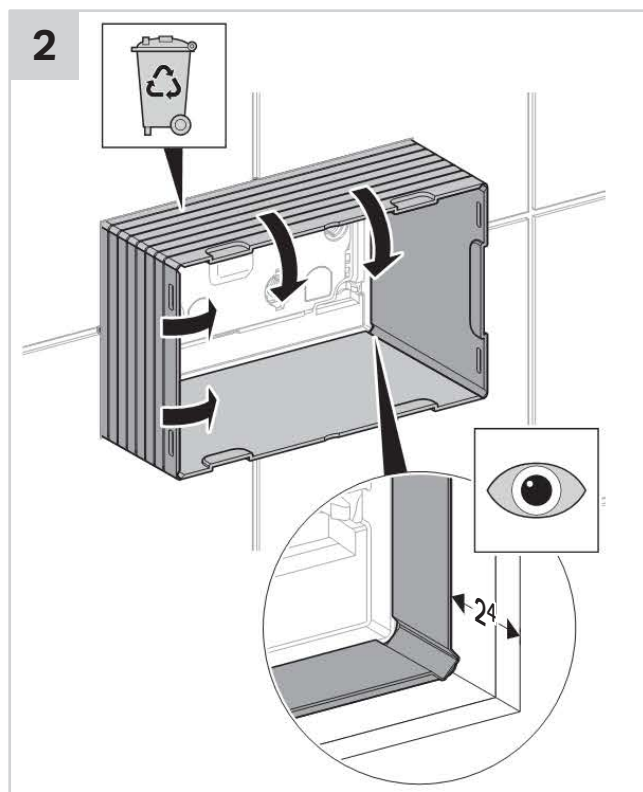
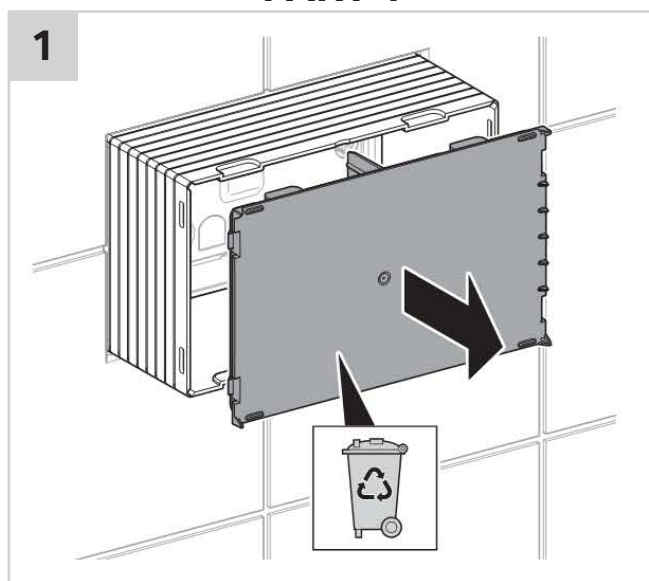
■ GEBERIT

OMEGA UNDER COUNTER MECHANICAL BTW 4S CONCEALED CISTERN

OMEGA60 BUTTON INSTALLATION INSTRUCTIONS



PART 1



Plumbers, please ensure a copy of the installation instructions is left with the end user for future reference

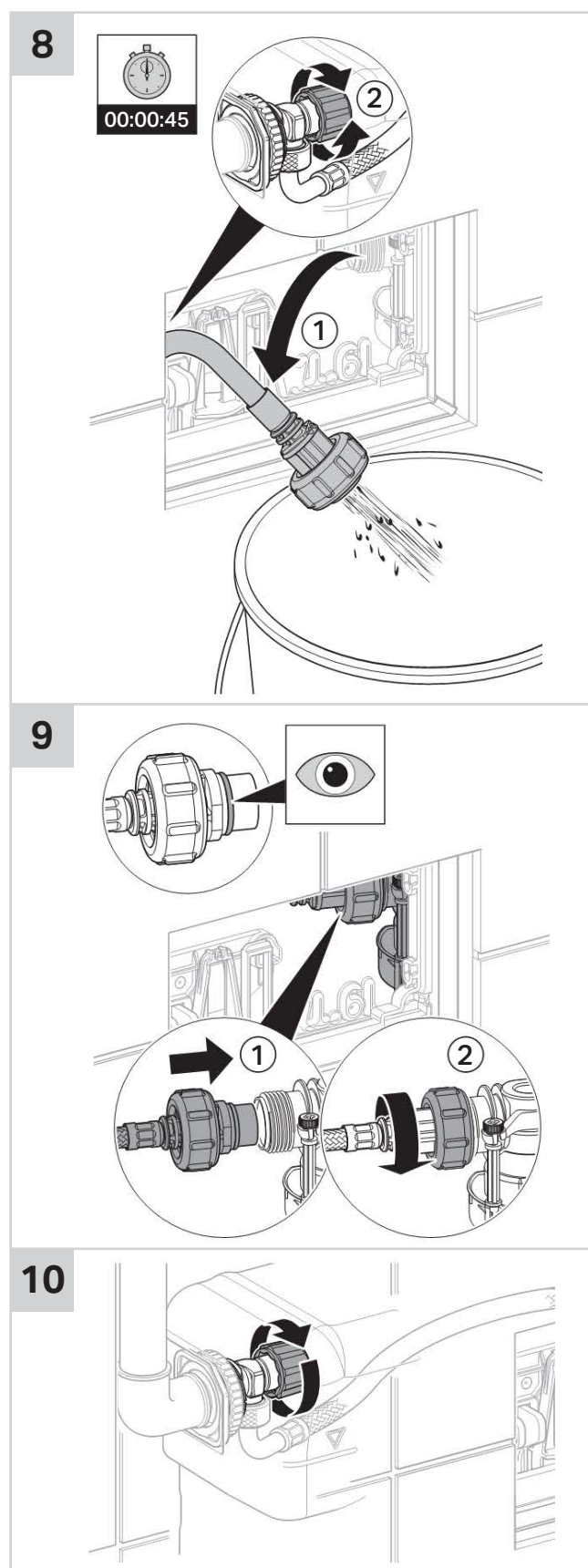
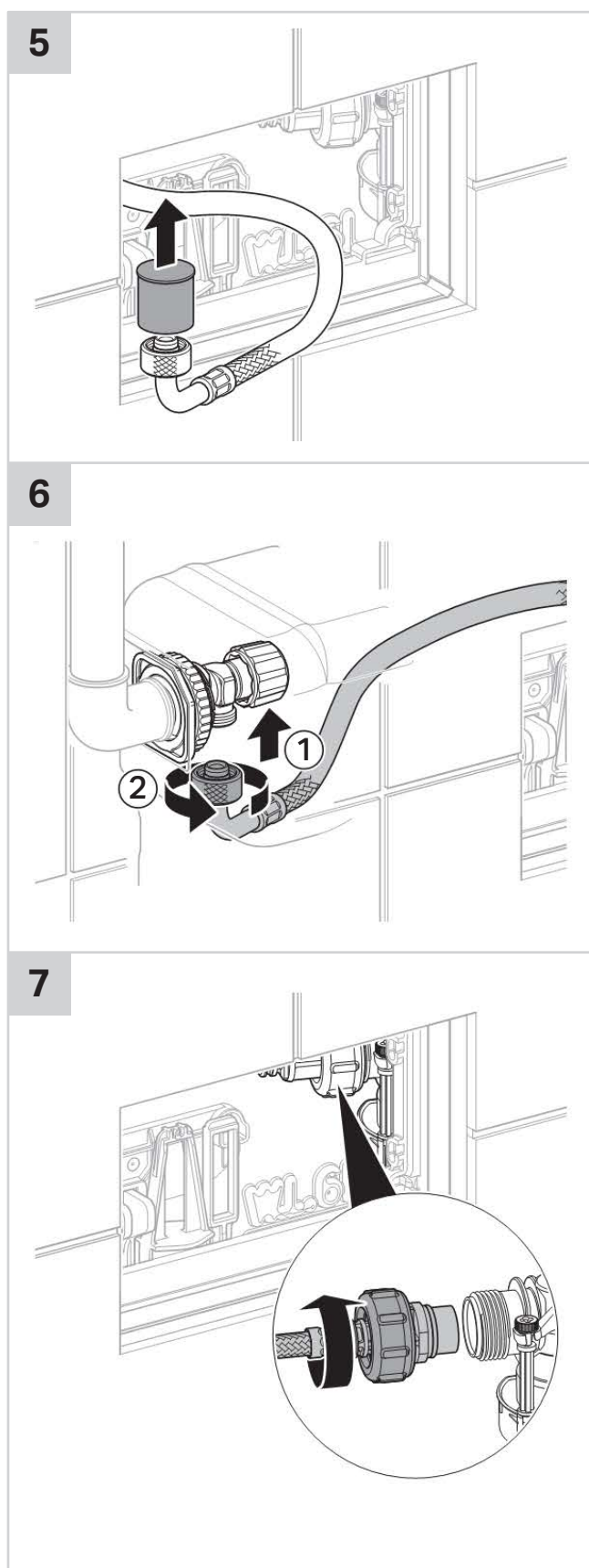
■ GEBERIT

reece

■ GEBERIT

OMEGA UNDER COUNTER MECHANICAL BTW 4S CONCEALED CISTERN

OMEGA60 BUTTON INSTALLATION INSTRUCTIONS



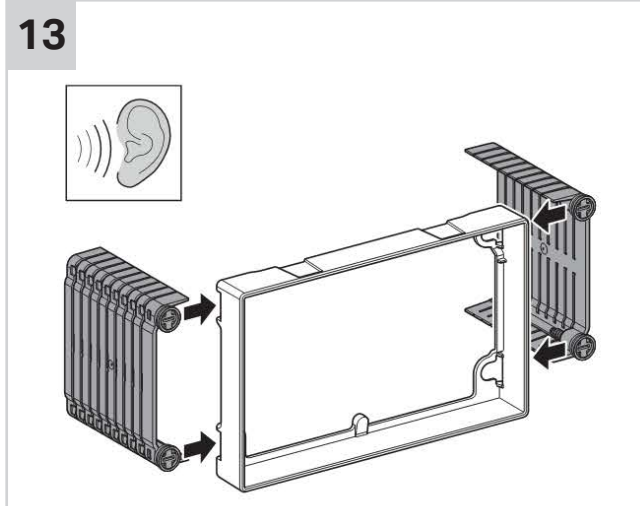
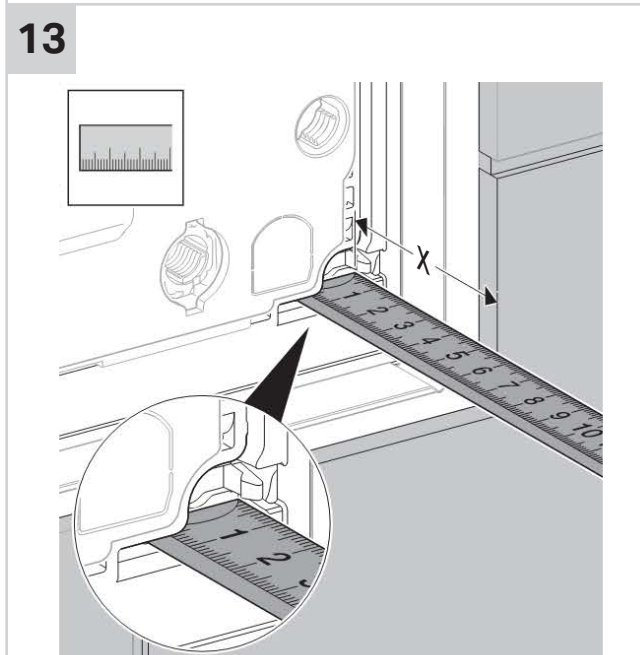
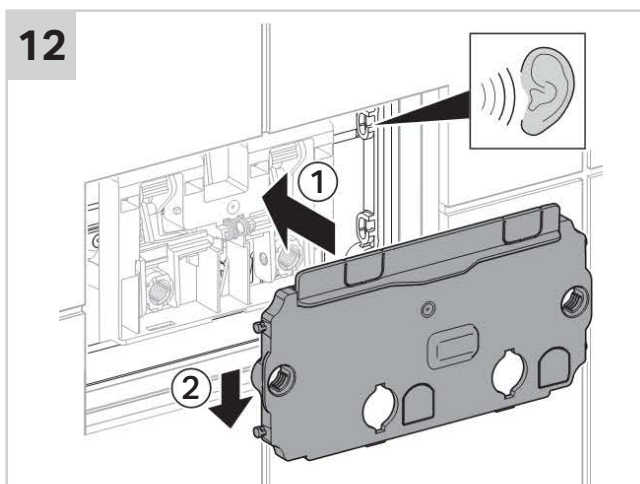
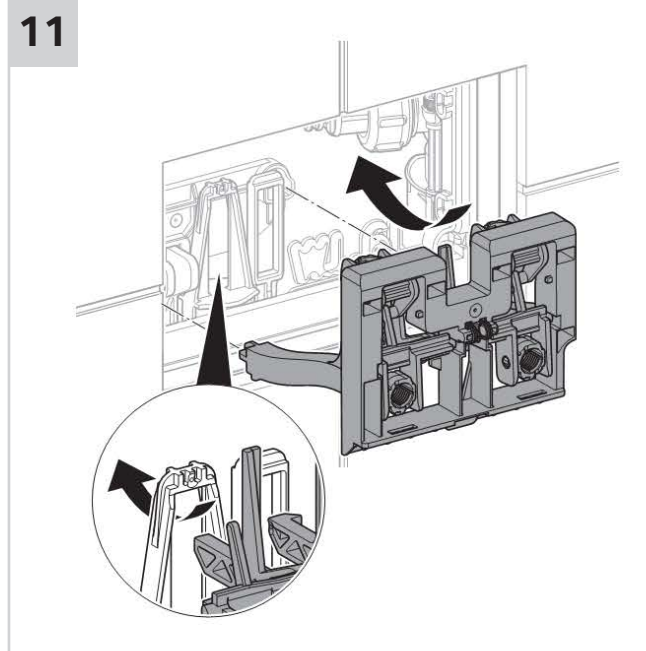
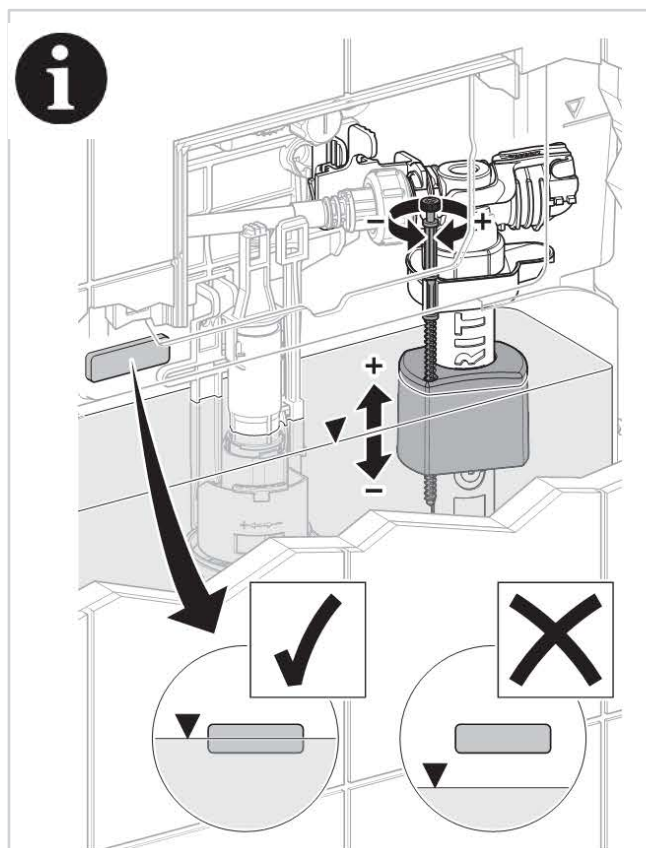
Plumbers, please ensure a copy of the installation instructions is left with the end user for future reference

■ GEBERIT

reece

OMEGA UNDER COUNTER MECHANICAL BTW 4S CONCEALED CISTERN

OMEGA60 BUTTON INSTALLATION INSTRUCTIONS

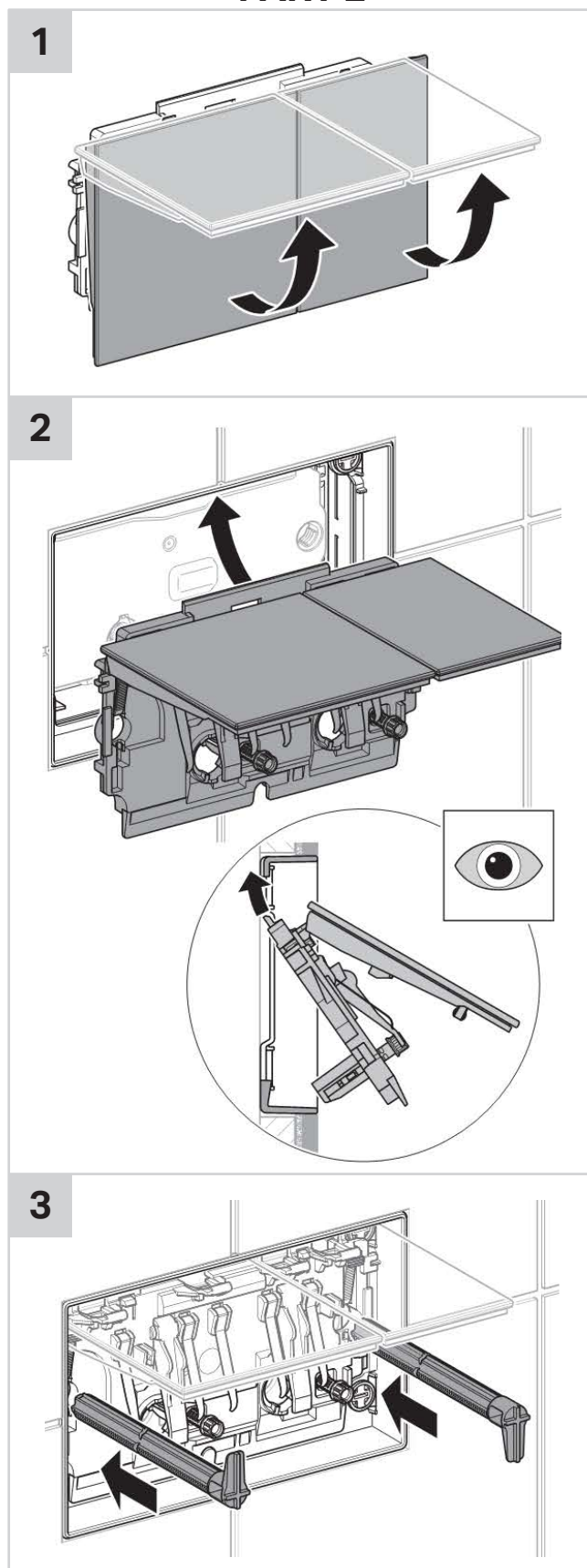
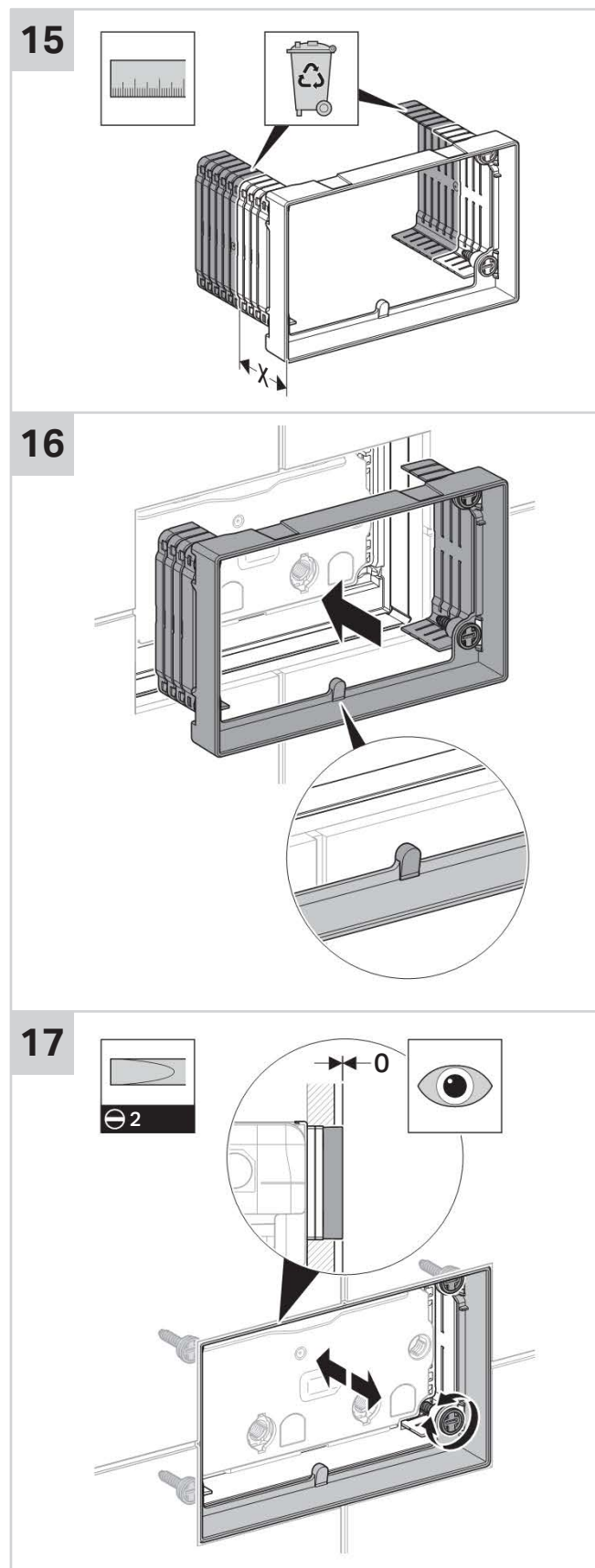


■ GEBERIT

OMEGA UNDER COUNTER MECHANICAL BTW 4S CONCEALED CISTERN

OMEGA60 BUTTON INSTALLATION INSTRUCTIONS

PART 2



Plumbers, please ensure a copy of the installation instructions is left with the end user for future reference

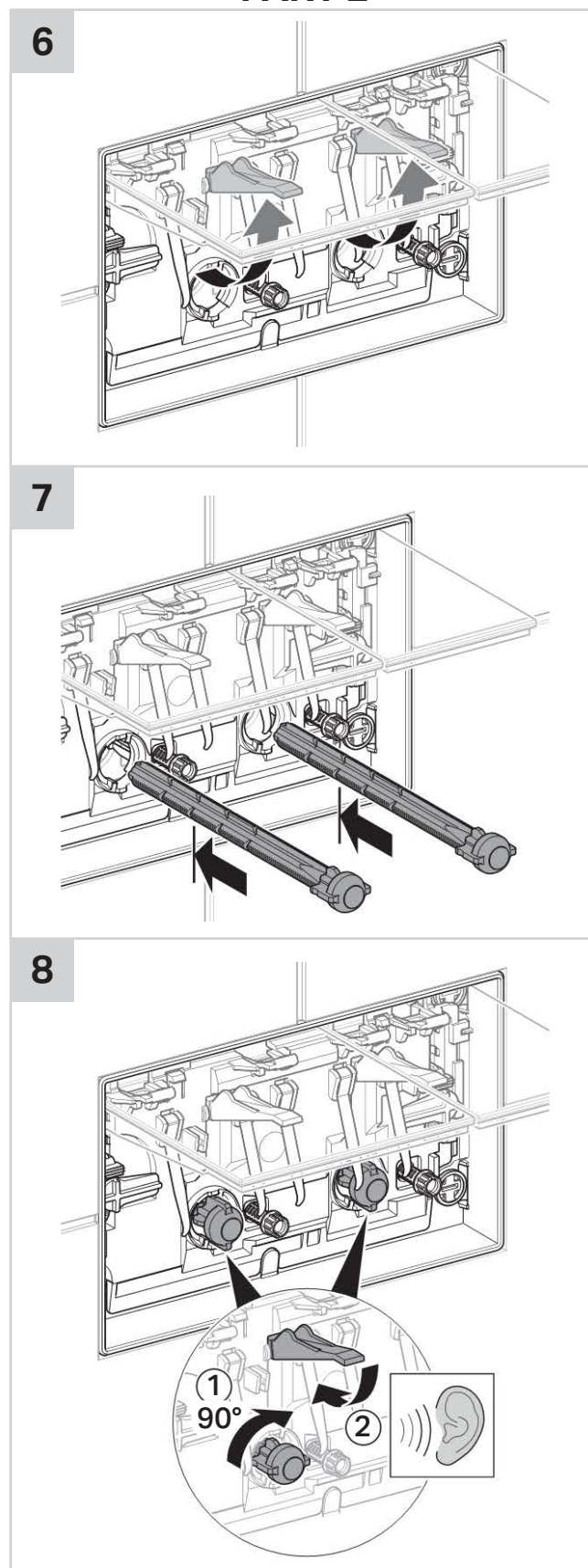
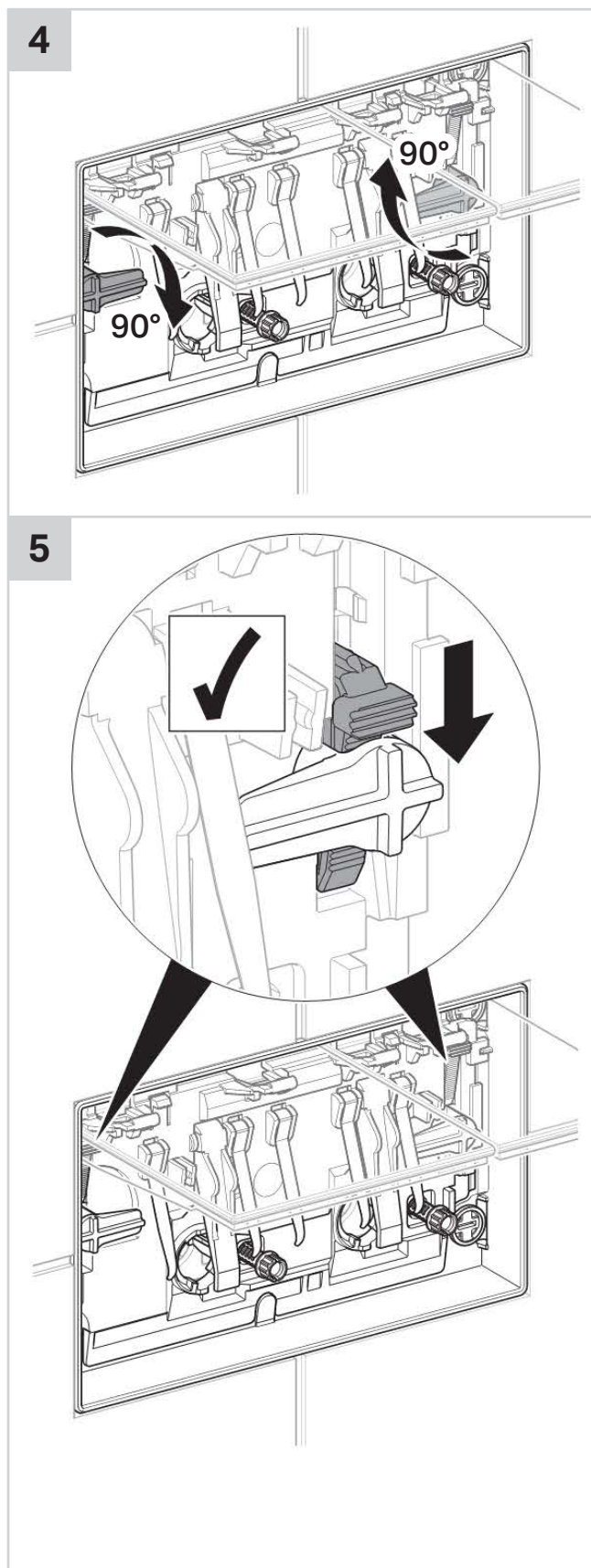
■ GEBERIT

reece

OMEGA UNDER COUNTER MECHANICAL BTW 4S CONCEALED CISTERN

OMEGA60 BUTTON INSTALLATION INSTRUCTIONS

PART 2



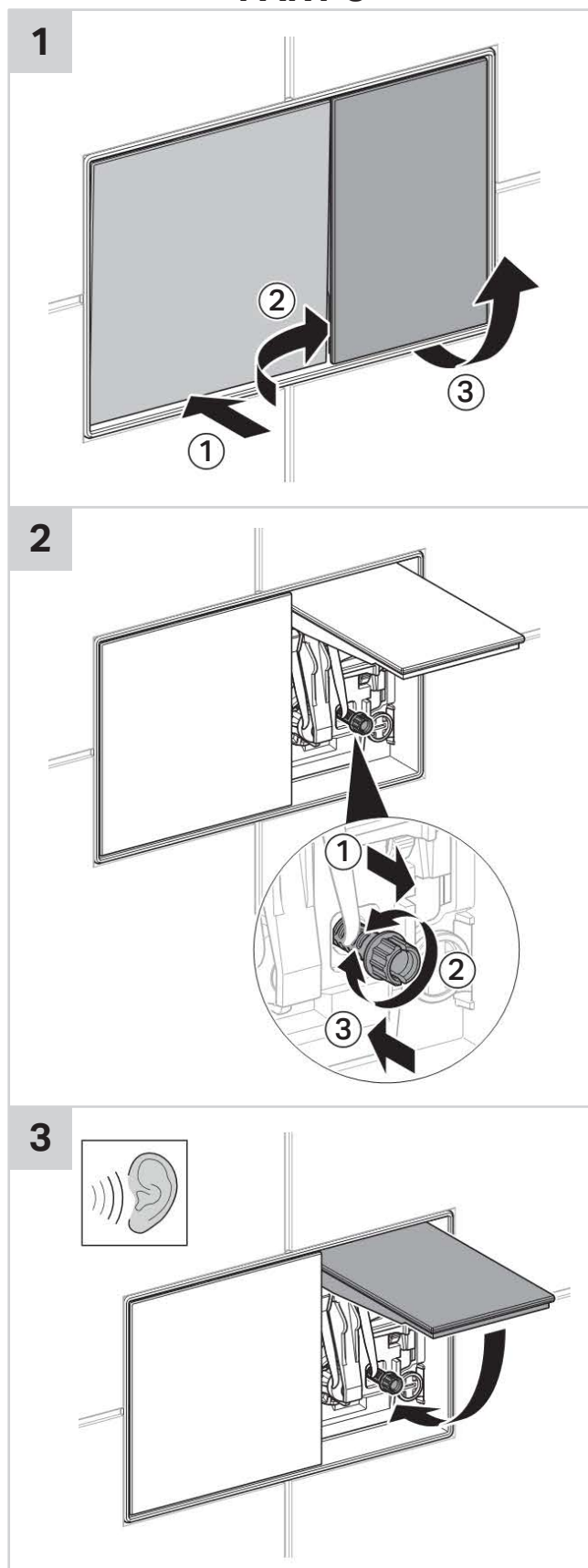
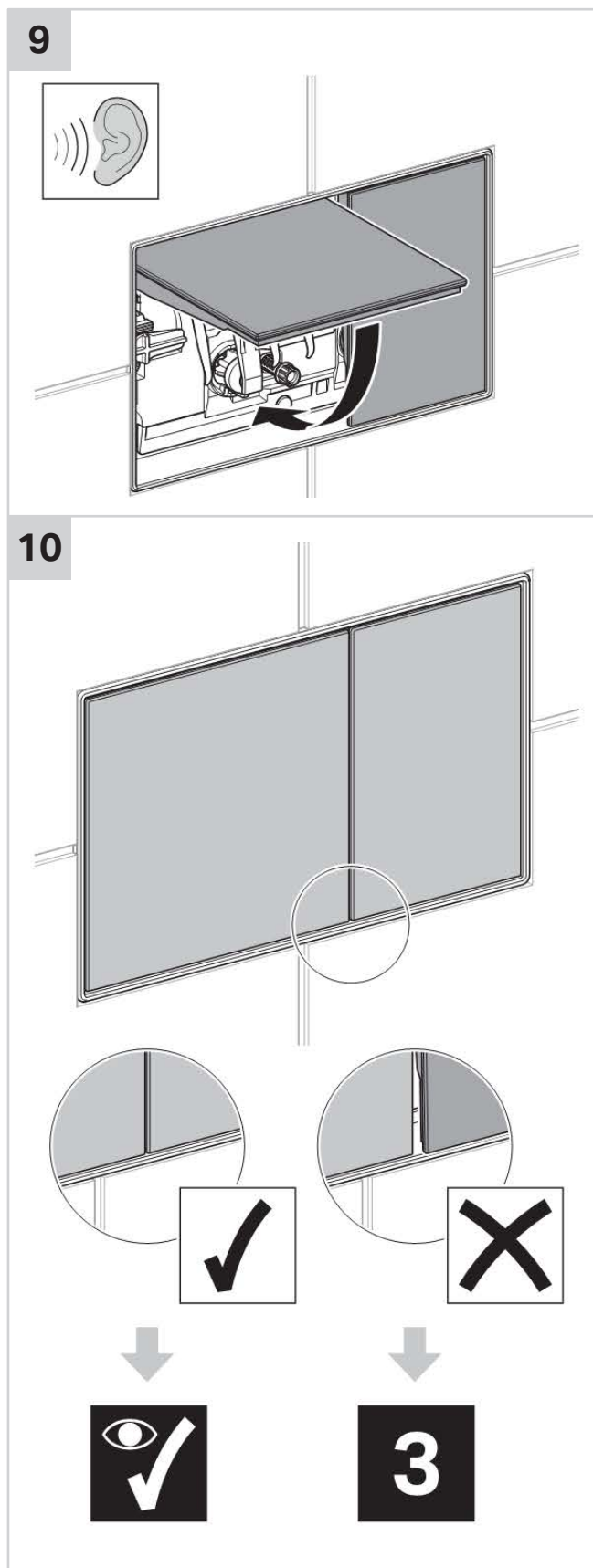
Plumbers, please ensure a copy of the installation instructions is left with the end user for future reference

■ GEBERIT

OMEGA UNDER COUNTER MECHANICAL BTW 4S CONCEALED CISTERN

OMEGA60 BUTTON INSTALLATION INSTRUCTIONS

PART 3



Plumbers, please ensure a copy of the installation instructions is left with the end user for future reference

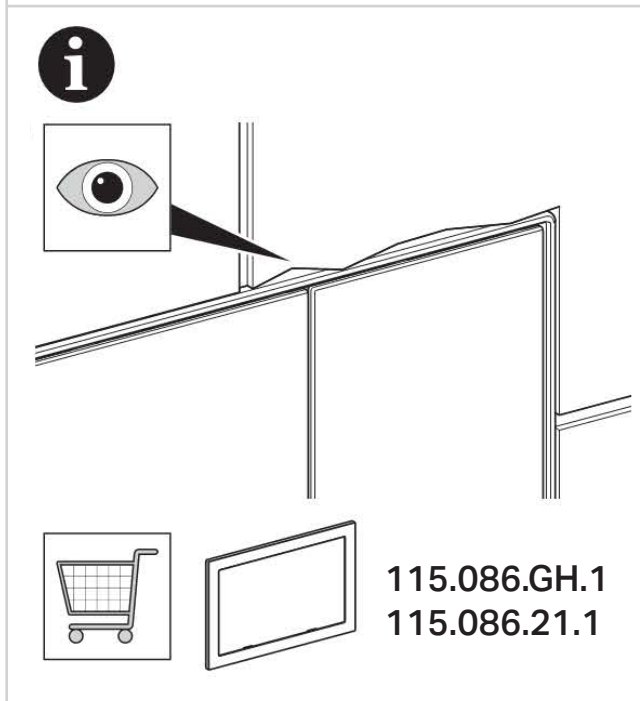
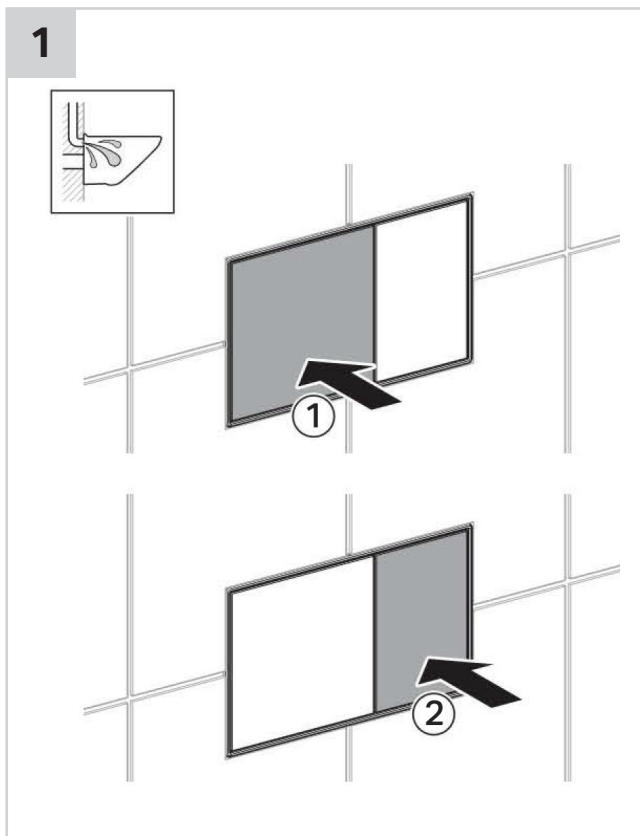
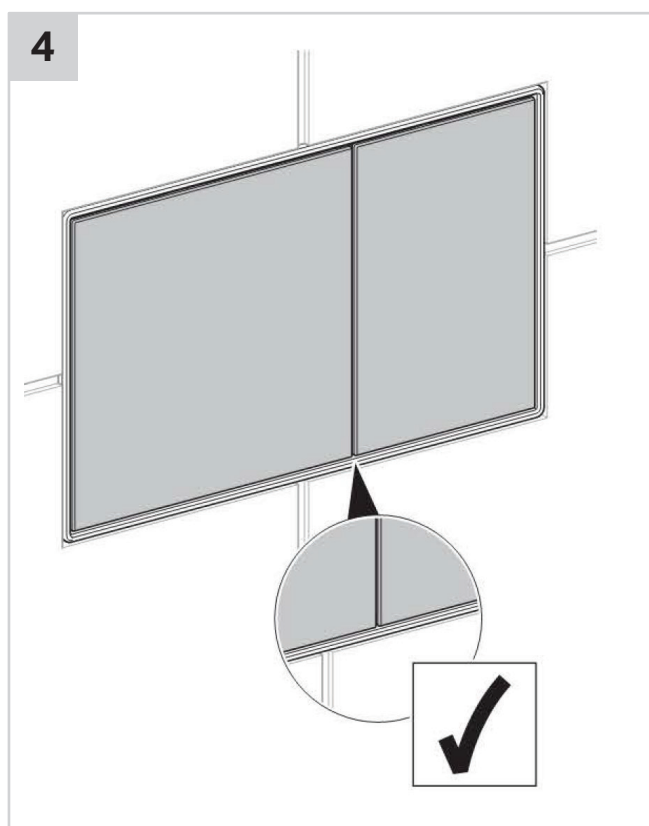
■ GEBERIT

reece

■ GEBERIT

OMEGA UNDER COUNTER MECHANICAL BTW 4S CONCEALED CISTERN

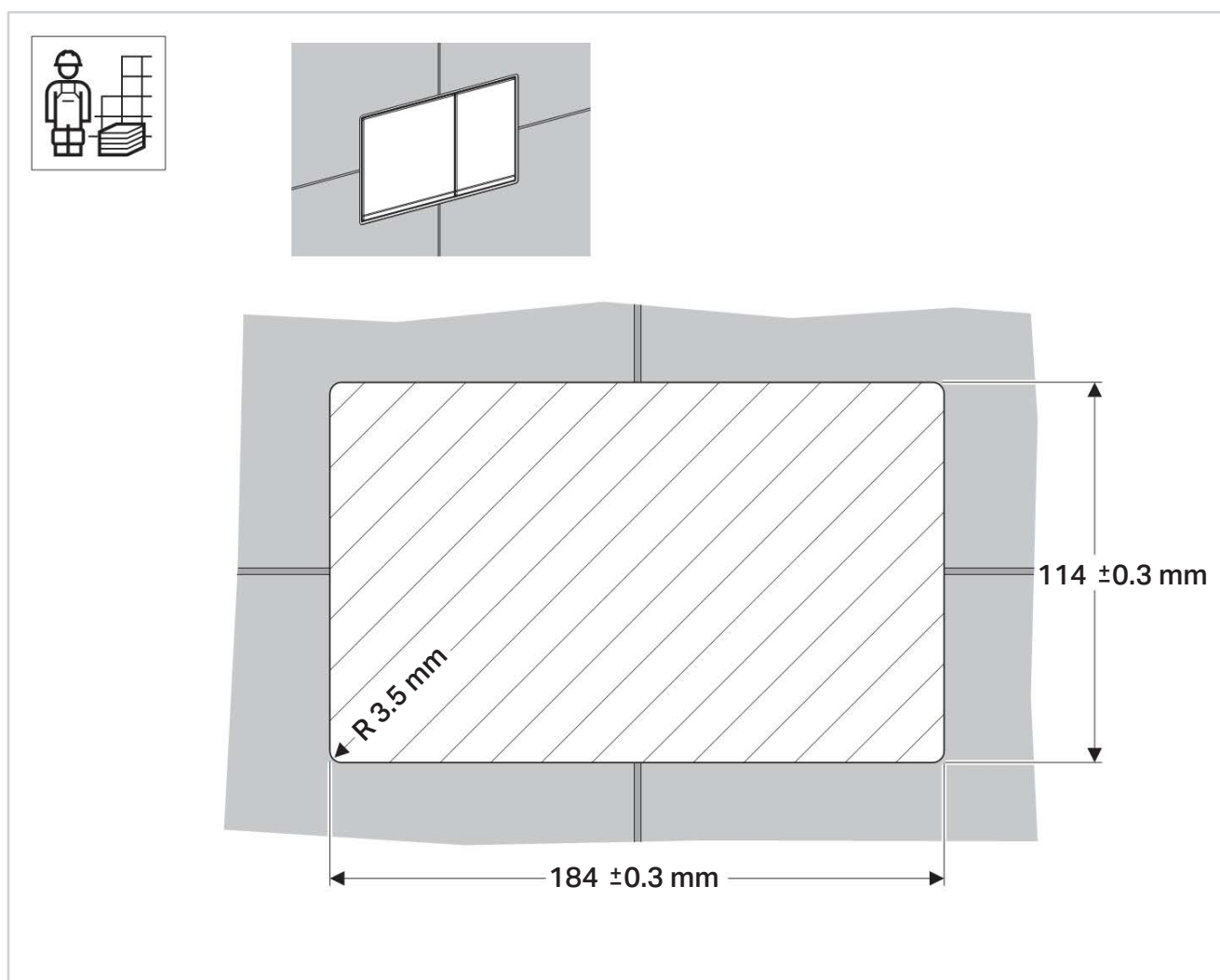
OMEGA60 BUTTON INSTALLATION INSTRUCTIONS



Plumbers, please ensure a copy of the installation instructions is left with the end user for future reference

■ GEBERIT

reece

**OMEGA UNDER COUNTER MECHANICAL
BTW 4S CONCEALED CISTERN****OMEGA60 BUTTON INSTALLATION INSTRUCTIONS**



OMEGA UNDER COUNTER MECHANICAL BTW 4S CONCEALED CISTERN

REECE PRODUCT QUALITY GUARANTEE

You have purchased a quality product from Reece Pty Ltd ABN 84 004 097 090 ("Reece"). This product is covered by a 15 year product warranty on the tank and push plate and a 3 year warranty on internal components including valves, electronic and pneumatic parts.

15 YEAR WARRANTY – DOMESTIC USE

This warranty covers faults in the product construction, material and assembly. Products which are within 15 years from the date of purchase, found upon inspection by an authorised Reece representative, to be defective in construction, material or assembly, will be repaired or exchanged with an equivalent product free of charge. Replaced items become Reece's property.

All replacement products will be available for collection without charge to the customer at the nearest Reece branch to the customer's location, or elsewhere as agreed between the customer and Reece.

LABOUR

The labour for the replacement of products to which this warranty applies will be supplied by Reece or relevant supplier using licensed plumbers engaged by Reece or relevant supplier within 1 year from the date of purchase.

Spare parts which are within 1 year from the date of purchase found upon inspection by an authorised Reece representative to be defective in construction, material or assembly, will be replaced free of charge.

WARRANTY CONDITIONS

This warranty will apply only under all of the following conditions:

- The item has been installed by a licensed plumber
- The item has been installed for and subjected to domestic residential use only
- Failure is due to a fault in the manufacture of the product
- Proof of purchase (including the date of purchase) is provided
- The installation of the product is in accordance with the instructions provided

This warranty does not cover products purchased as an ex-display without being fully checked and tested for sale by the manufacturer.

This warranty does not include faults caused by:

- Unsuitable or improper use
- Incorrect installation or installation not in accordance with the instructions provided
- Installation or part installation by the purchaser or any person other than a LICENSED PLUMBER
- Normal wear and tear
- Inadequate or complete lack of maintenance
- Chemical, electrochemical or electrical influences
- Harsh detergents or abrasive cleaners used on product finishes

1 YEAR WARRANTY – COMMERCIAL USE

'Commercial' use is all use other than for normal domestic residential purposes, including use in non-business places as in public buildings, schools, sports centres and in establishments that contain private bathrooms with high frequency of use by many individuals, such as hotels, motels, retirement villages and hospitals.

The Commercial warranty covers this product against manufacturing faults in the construction, material and assembly of both the finished products and any spare parts for a period of 1 year from the date of purchase. Products and spare parts which are found upon inspection by an authorised Reece representative to be defective in construction, material or assembly will be repaired or exchanged free of charge.

Replaced items become Reece's property. The labour for the replacement of products and spare parts to which this warranty applies will be supplied by Reece or relevant supplier using licensed plumbers engaged by Reece or relevant supplier.

The Warranty Conditions and exclusions which apply to the domestic use warranty also apply to this commercial warranty.

EXCLUSIONS

To the fullest extent permitted by law, Reece excludes all liability for damage or injury to any person, damage to any property, and any indirect consequential or other loss or damage.

CLAIM PROCEDURE

For all warranty queries customers are to contact the branch where the product was purchased. These details can be found on your purchase invoice. Our goods come with guarantees that cannot be excluded under the Australian Consumer Law. You are entitled to a replacement or refund for a major failure and for compensation for any other reasonably foreseeable loss or damage. You are also entitled to have the goods repaired or replaced if the goods fail to be of acceptable quality and the failure does not amount to a major failure.